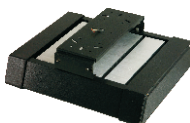




CANOPY LIGHT ARTEMIS SERIES



Product Characteristics:

1. Applied with top grade LED.
2. Reliable and high efficiency driver.
3. Luminaire efficiency up to 90lm/W±3lm.
4. Original creation of built-in chimney effect thermal management system takes the lead internationally.
5. Simple and reliable snap-in type opening and closing structure for driver compartment, fast plug-in/out connector design for wiring ensure quick and convenient replacement and maintenance.
6. Modular patented structure integrating with independent dust proof, waterproof, heat dissipation, optical component.
7. Module as standard unit of series products, module quantity can be added or reduced to meet the requirement of power serialization.

Application

High Mast, Tunnel, Gas Station, Billboard

Item No	KS-BY2R028A2M2	KS-BY2R042A2M2	KS-BY2R056A2M2	KS-BY2R070A2M2
Input Voltage	AC100~277V	AC100~277V	AC100~277V	AC100~277V
Frequency Range	50/60Hz	50/60Hz	50/60Hz	50/60Hz
System Consumption	61W	91W	122W	153W
LED Initial Flux	5566 Lm	8349 Lm	11132 Lm	13915 Lm
Power Efficiency	0.92	0.92	0.92	0.92
Power Factor	>0.95	>0.95	>0.95	>0.95
Luminaire Efficiency	>90%	>90%	>90%	>90%
Color Temperature	5000-6000K	5000-6000K	5000-6000K	5000-6000K
Color Rendering Index	Ra>75	Ra>75	Ra>75	Ra>75

Operation Environment

Temp. -40°C ~ +50°C,
Humidity 10%~95%

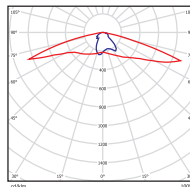
IP Rating	IP65	IP65	IP65	IP65
Lifetime	>50000H	>50000H	>50000H	>50000H
Net Weight	7.5kg	8.0kg	9.5kg	10kg

Item No

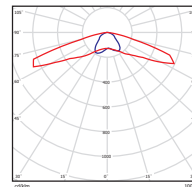
KS-BY2R084A2M2 KS-BY2R098A2M2 KS-BY2R112A2M2 KS-BY2R126A2M2

Input Voltage	AC100~277V	AC100~277V	AC100~277V	AC100~277V
Frequency Range	50/60Hz	50/60Hz	50/60Hz	50/60Hz
System Consumption	183W	214W	244W	275W
LED Initial Flux	16698 Lm	19473 Lm	22257 Lm	25039 Lm
Power Efficiency	0.92	0.92	0.92	0.92
Power Factor	>0.95	>0.95	>0.95	>0.95
Luminaire Efficiency	>90%	>90%	>90%	>90%
Color Temperature	5000-6000K	5000-6000K	5000-6000K	5000-6000K
Color Rendering Index	Ra>75	Ra>75	Ra>75	Ra>75
Operation Environment	Temp. -40°C ~ +50°C, Humidity 10%~95%			
IP Rating	IP65	IP65	IP65	IP65
Lifetime	>50000H	>50000H	>50000H	>50000H
Net Weight	10.6kg	11.2kg	11.8kg	12.4kg

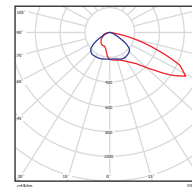
Polar Intensity Diagram:



A2M2/TYPE II



S1M6/TYPE I



A4S4/TYPE IV